



SHOP TO LET

274 Old Brompton Road
London SW5

Location

The premises are located on the north side of the Old Brompton Road within walking distance of Earl's Court (District, Piccadilly lines) and West Brompton (District) underground stations.

Nearby occupiers include Starbucks, Costa, Foxtons, TLC, Troubadour Wines, Vita Hair & Beauty, Fix A Frame, and Sabai Leela.

Description

The premises are arranged over a ground floor. The approximate net internal area is as follows:

Ground: 365 sq.ft 33.91 sq.m

Lease

Available on a new effective FRI lease for a term of 10 years to be contracted out of the Security of Tenure provisions of the Landlord & Tenant Act 1954 part II (as amended).

Ian Simpson

D: 020 7590 8957

E: ian@milescommercial.co.uk

Michael Hole

D: 020 7581 9722

E: michael@milescommercial.co.uk



Rent

£36,500 pax

Rates Payable

Interested parties are advised to make their own enquiries with the relevant local authority.

Legal Costs

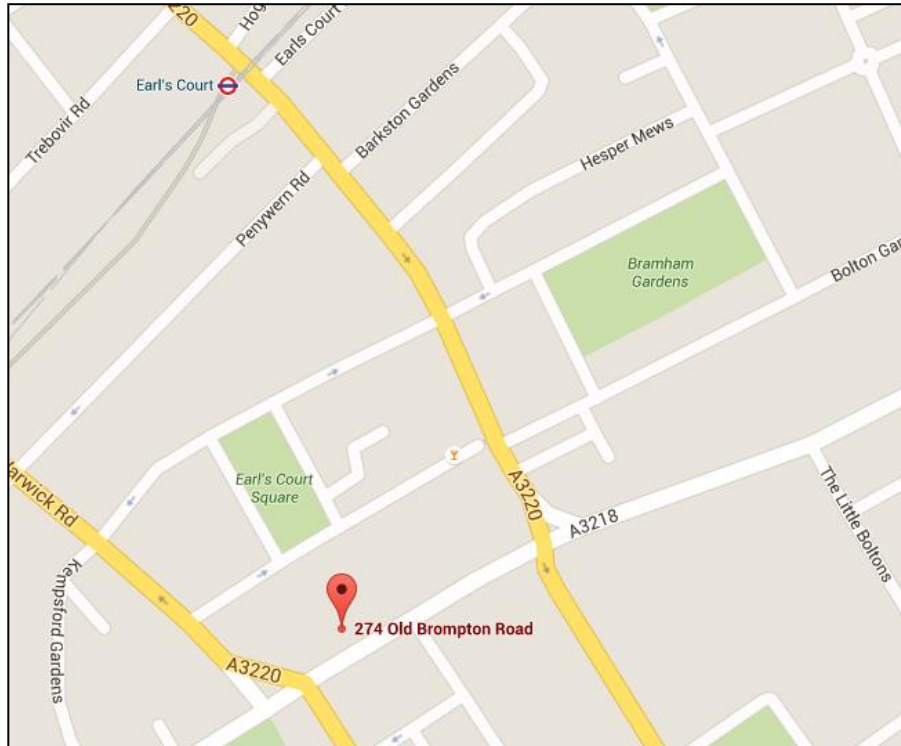
Each party to bear their own

Viewing

Viewings strictly by prior appointment via joint sole agents:-

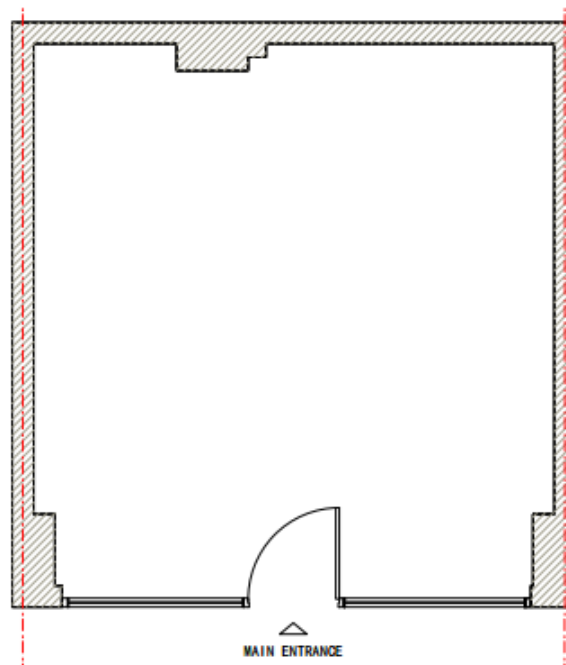
or via our joint agents JP Retail 020 7039 0130

Location



Source: google maps

Floor Plans - Indicative



EPC

Available upon request.

Misrepresentation Act: Miles Commercial Limited for themselves and for the vendors or lessors of the property whose agents they are give notice that :i) The particulars are set out as a general outline only for the guidance of intending purchasers or lessees and do not constitute part of an order or contract; ii) All descriptions, dimensions, references to condition and necessary permissions for use and occupation and other details are given in good faith and are believed to be correct, but any intending purchaser or tenant should not rely on them as statements or representations of fact but must satisfy themselves by inspection or otherwise as to the correctness of each of them; iii) No person in the employment of Miles Commercial Limited has any authority to make or give any representation or warranty whatsoever in relation to this property.

Miles Commercial Limited trading as Miles Commercial, registered in England at NatWest Bank Chambers, 55 Station Road, New Milton, Hampshire BH25 6JA Company registration No:259102

IS0716