



Sloane Street

PRIME OFFICE SPACE TO LET

Sloane Street, London SW1X 9QX



THE BUILDING

190-192 Sloane Street provides 7,400 sq ft of exceptional office space, sitting on a prominent corner location in the heart of Knightsbridge. Spread over five floors, above Louis Vuitton, the newly refurbished accommodation provides column-free space with excellent natural light on three aspects.

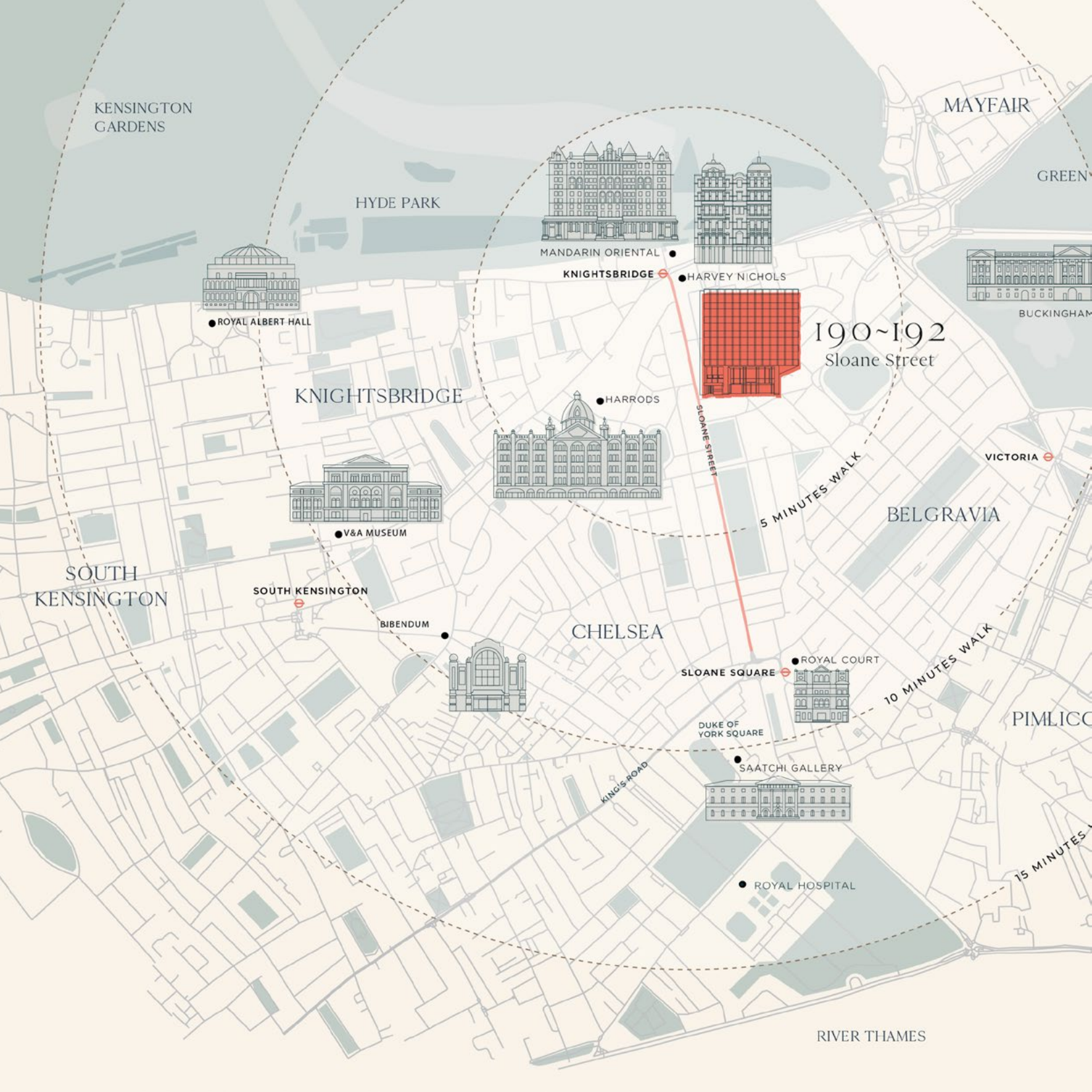
LOCA



~TION

GIORGIO ARMANI





KENSINGTON
GARDENS

MAYFAIR

GREEN

HYDE PARK



ROYAL ALBERT HALL

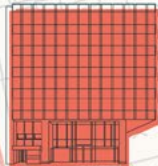


MANDARIN ORIENTAL



HARVEY NICHOLS

KNIGHTSBRIDGE



190~192
Sloane Street



BUCKINGHAM

KNIGHTSBRIDGE

HARRODS



V&A MUSEUM

SOUTH KENSINGTON

SOUTH
KENSINGTON

BIBENDUM



CHELSEA

SLOANE SQUARE

ROYAL COURT



DUKE OF
YORK SQUARE

SAATCHI GALLERY



ROYAL HOSPITAL

BELGRAVIA

VICTORIA

PIMLICO

RIVER THAMES

LONDON'S GOLDEN POSTCODE

YOUR JOURNEY IN MINUTES



KNIGHTSBRIDGE	🚶	2 MINUTES
SOUTH KENSINGTON	🚶	12 MINUTES
VICTORIA	🚶	14 MINUTES
GREEN PARK*	🚶	4 MINUTES
KING'S CROSS*	🚶	15 MINUTES
BANK*	🚶	16 MINUTES
LIVERPOOL STREET*	🚶	18 MINUTES
HEATHROW AIRPORT*	🚶	45 MINUTES

* From Knightsbridge Underground Station. Journey times sourced from TFL.



The offices occupy a prime location on central Sloane Street, surrounded by the world's most luxurious brands and a short walk to **Harrods** and **Harvey Nichols**; but the neighbourhood offers so much more. From the **'village shops'** on Pavilion Road (including a butcher, baker, greengrocer and cheesemonger) to the rich cultural scene offered by nearby **Saatchi**, **Royal Court**, **Cadogan Hall** and internationally famous calendar of events from the Chelsea Flower Show to Masterpiece Fair.

A **huge array of places to eat and drink** are on the doorstep, whether the occasion calls for a discrete breakfast at chic Colbert, laid back lunch at Granger & Co, glamorous cocktails at Harry's Dolce Vita or inventive fine dining at Adam Handling Chelsea. One of London's best food markets takes place at Duke of York Square each Saturday.

As one of London's 'fittest' boroughs* and offering a wealth of green gardens and parks, **fitness and wellbeing** offerings include Urban Retreat, Ushvani Spa and innovative fitness from KXU and The Peak at Jumeirah Carlton Tower. Complimentary yoga and running clubs frequently take place on the green outside Saatchi.

Chelsea and Knightsbridge provides the ultimate lifestyle for those who work here.

* 44% of residents (aged 16+) participate in sport at least once a week (Sport England, 2016)

LIFE



Location



~STYLE

COMPLIMENTARY CONCIERGE

Your Lifestyle Manager, based locally, can deliver an extensive range of professional and leisure services,* including:

- Complimentary restaurant reservation service, special promotions and club entry
- Ticket sourcing and booking service
- Event venue sourcing
- Event conception, production and management service
- Chef and event catering
- Corporate hospitality packages
- Specialist car hire, chauffeur & taxi service
- Interpreters for overseas visitors and VIP clients
- Dry cleaning, shoe-care and laundry
- Gift service
- Travel advisory and booking service
- Health, fitness and beauty services
- Monthly magazine, Cadogan VIP, to alert you to local events, offers and privileges.



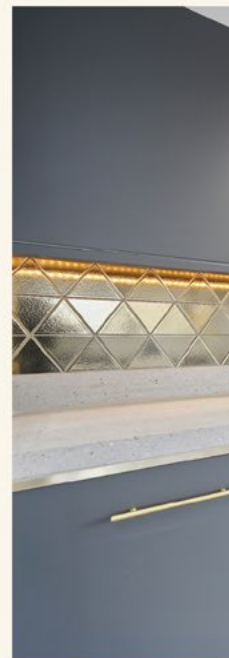
* some services are subject to a fee

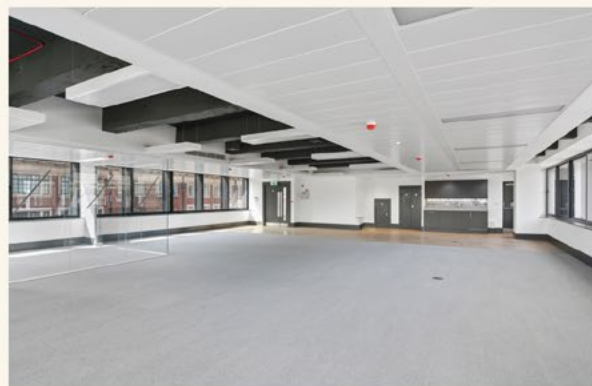


THE SPACE

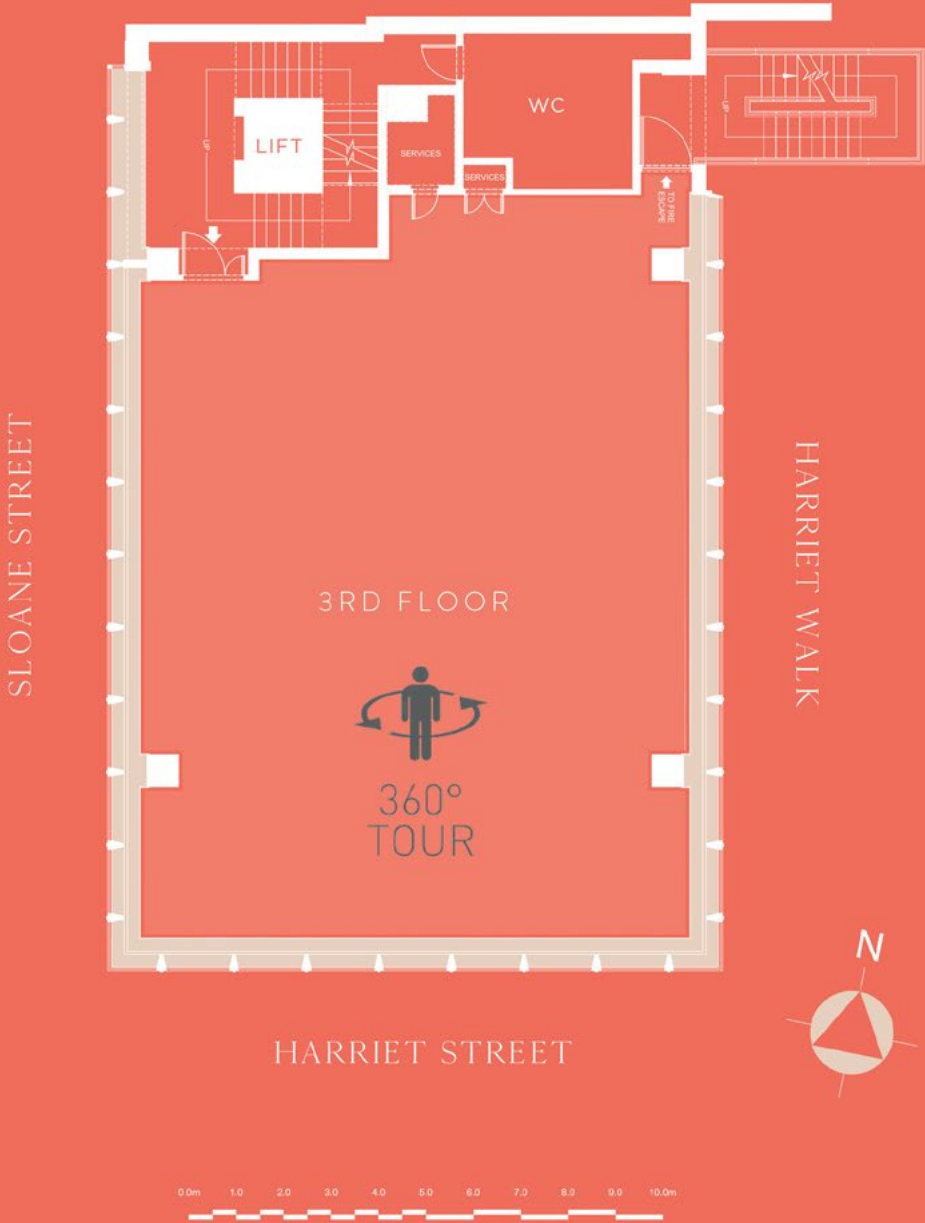


TAKE A WALKTHROUGH TOUR OF THE SPACE BY
CLICKING ON THE '360 DEGREE TOUR' ICON





Newly refurbished accommodation ready for occupation with high, designed specification. 'Plug and play' office suites, fully fitted with raised access floors, kitchenettes, air conditioning system and carpeting.



TAKE A WALKTHROUGH TOUR OF THE SPACE BY CLICKING ON THE '360 DEGREE TOUR' ICON (ABOVE)

INDICATIVE FLOOR PLAN

SPECIFICATION

NEWLY REFURBISHED (JAN 2020) AND AVAILABLE FROM Q2 2020

RAISED ACCESS FLOORS

NEW KITCHENETTE

AIR CONDITIONING

VIDEO ENTRY PHONE SYSTEM

EXCELLENT NATURAL LIGHT

COLUMN FREE

PASSENGER LIFT

FIT OUT SOLUTION AVAILABLE BY ARRANGEMENT

DATA SOLUTIONS

CROSS SECTION

FLOOR	SQ.M	SQ. FT	
5TH	173.25 SQ. M	1,864.8 SQ. FT	LET
4TH	174.20 SQ. M	1,875.1 SQ. FT	LET
3RD	173.16 SQ. M	1,863.9 SQ. FT	AVAILABLE
2ND	172.65 SQ. M	1,858.4 SQ. FT	LET
1ST	165.97 SQ. M	1,786.5 SQ. FT	LET
MEZZANINE	LOUIS VUITTON		
GROUND	LOUIS VUITTON		
BASEMENT	LOUIS VUITTON		

* SUBJECT TO MEASUREMENT

ABOUT

Cadogan takes pride in the vibrant history and heritage of Knightsbridge and Chelsea that makes this area unique. We are committed to its long term success. Our proactive management of Sloane Street ensures that it remains one of the world's finest luxury destinations.

The Cadogan Estate spans 93 acres of the Royal Borough of Kensington & Chelsea and has been under the same family ownership for 300 years.

cadogan.co.uk



CONTACT

OUR AGENTS



LUKE FLOWER

T 020 3257 6343 | luke.flower@cbre.com



MILES COMMERCIAL

PETER BROMWICH

T 020 7581 9722 | peter@milescommercial.co.uk

ROSS CRUMMEY

T 020 7590 8951 | ross@milescommercial.co.uk

RENT & LEASE

TERMS ON APPLICATION

Strictly by appointment only.

Whilst every care is taken in the preparation of these particulars CBRE and Miles Commercial and the vendor/lessor take no responsibility for any error, mis-statement or omission in these details. Measurements are approximate and for guidance only. These particulars do not constitute an offer or contract and members of the Agent's firm have no authority to make any representation or warranty in relation to the property.

