

- PRIME SHOP TO LET-

253 King's Road

CHELSEA, LONDON. SW3



Contact

Ian Simpson
020 7590 8957

ian@milescommercial.co.uk

Ross Crummey
020 7581 9722

ross@milescommercial.co.uk

Or via Savills - Lily Harral 020 3618 3515 | Tiffany Luckett 020 7758 3878

Location

The shop is located on the south side of King's Road, The area is home to many independent retailers, bars and restaurants.

Nearby occupiers include **Hari's Hairdressers, OKA, Royal Selangor, Blaiz, Designer's Guild, Silvera, My Old Dutch and Peggy Porschen.**

Accommodation

The shop is arranged over ground and first floor and comprises the approximate areas as follows:-

Ground floor	572 sq ft	53.14 sq m
Mezz	59 sq.ft	5.48 sq m
First floor	355 sq ft	32.98 sq m
Terrace	91 sq.ft	8.45 sq m
Total	1,077 sq ft	100.05sq m

Rent

Upon application.

Lease

A new lease available for a term to be agreed, contracting outside the security of tenure provisions of the Landlord & Tenant Act 1954. The lease will be subject to annual RPI increases.

Planning

A1 use (shop)

Rates

Interested parties are advised to make their own enquiries with RBKC rates department.

EPC

Available on request

Legal Costs

Each party to bear their own

Viewings

Strictly by prior appointment via joint sole agents:

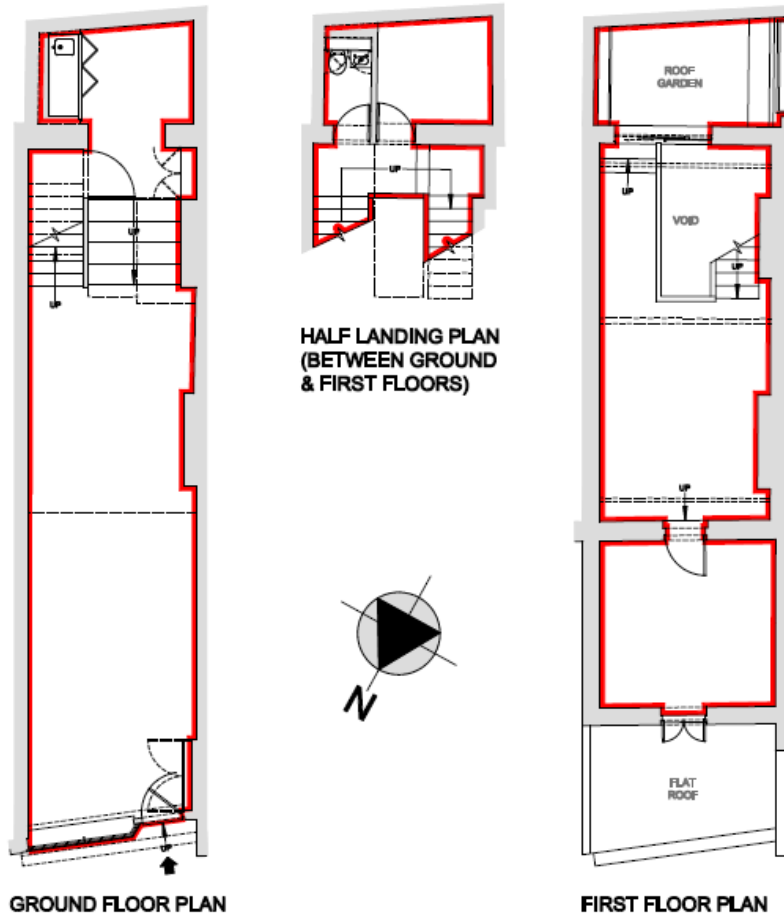


MILES COMMERCIAL

[MilesCommercial.co.uk](https://www.MilesCommercial.co.uk)

Floor Plans

For identification purposes only, not to scale.



DESIGNERS GUILD

HARI's
HAIRDRESSERS

BLAIZ


PEGGY PORSCHEN
LONDON

OKA. 
PAN ASIAN & SUSHI

OSBORNE & LITTLE

ROYAL
SELANGOR



MILES COMMERCIAL
MilesCommercial.co.uk