



Rossetti Studios

PREMISES FOR ARTISTS IN CHELSEA



CADOGAN



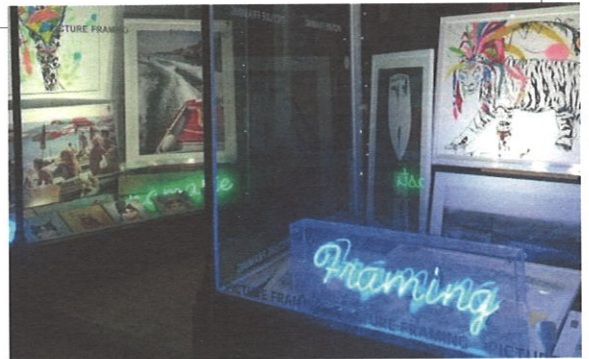
A complex of 8 original artists' studios, set in a Grade II listed building. Newly restored and renovated, flourishing in its original purpose as premises for creatives in Chelsea, London's original artist's quarter.

Heritage & Future

From JMW Turner's stunning sunsets and Dante Gabrielle Rossetti's Pre-Raphaelite masterpieces of the 19th century to the 1960's explosion of rebellious creativity on the King's Road, Chelsea has long been the place that artists call home.

Chelsea was the creative quarter of London. In the first half of the 20th century it had the greatest concentration of professional artists across the capital, as well as over 300 purpose-built artists' studios in use.

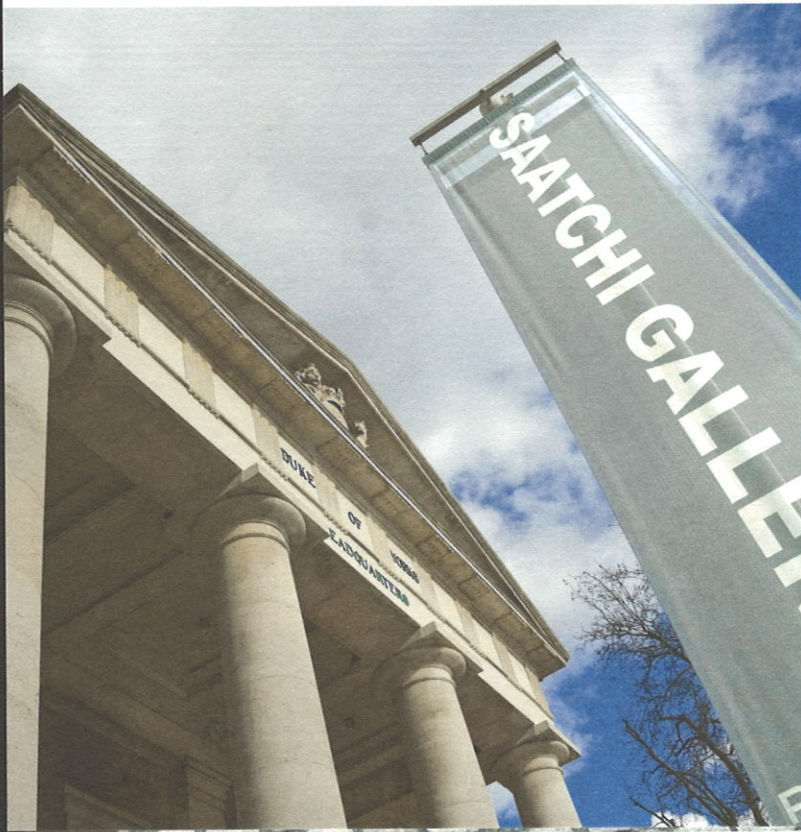
Today, the Saatchi Gallery and Chelsea Arts Club, as well as other much-loved local galleries, establishments and institutions show that the area's creative spirit is as strong as ever, even though all but a handful of artist's studios have disappeared.



One of the many commercial galleries that line the King's Road



The Saatchi Gallery (left and above)





LEFT
Sloane Square's 'Venus Fountain'
being painted by a local artist

BELOW LEFT
The Fighting Temeraire by
JMW Turner, who lived within a
5-minute walk of Rossetti Studios

BELOW RIGHT
Chelsea Arts Club with its famous
mural which is renewed each year

THE TIMES

April 30th 1948

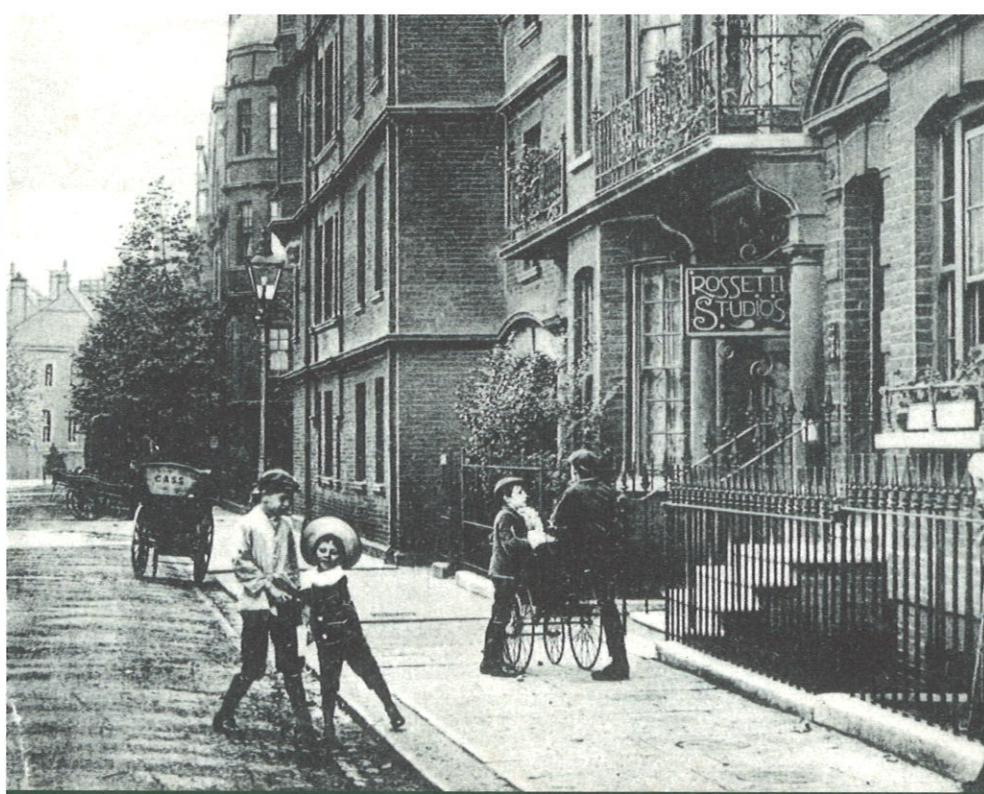
The Royal Academy of Arts is giving a fountain to Chelsea Borough Council to be placed in Sloane Square, as 'a significant tribute to the great and historic contribution of Chelsea to the artistic life of London.'



“The artists’ studio, in terms of built form and use, represents a characteristic and important element of the Royal Borough of Kensington and Chelsea.”

KATE ORME, SENIOR CONSERVATION
& DESIGN OFFICER RBKC





LEFT
Rossetti Studios' entrance from Flood Street in 1905

Rossetti Studios was where Augustus John and William Orpen founded The Chelsea Art School in 1904 and later, George Devine the film director, conceived the Royal Court Theatre. In the 1960's Ronald Traeger, the iconic fashion photographer, artist and graphic designer who regularly worked with Twiggy - another Chelsea local - was also based here.

“We feel it is essential that we contribute to safeguarding the area's wonderful bohemian heritage.”

HUGH SEABORN,
CHIEF EXECUTIVE, CADOGAN

BELOW from left; The Royal Court Theatre is a leading force in world theatre - cultivating and supporting undiscovered, emerging and established talent. Art installation on Sloane Square as part of Kensington+Chelsea Art Week. Chelsea Pensioners at the Open Art Fair, held every year at Duke of York Square.



Supporting the Arts in Chelsea

When Cadogan recently purchased Rossetti Studios, the buildings were crumbling and in a poor state of repair. The Grade II listed premises were rescued with a £4million renovation and restoration; respecting their original function, enhancing their character and history and refurbishing them to a modern-day standard. The studios will be occupied by practicing artists to contribute further towards Chelsea's rich artistic pedigree.

This is part of Cadogan's contribution to the wider stewardship of the area and support for the arts in Chelsea. From annual events, such as the spectacular floral art festival 'Chelsea in Bloom' and Kensington+Chelsea Art week to the ongoing support of Chelsea's world-class institutions of contemporary theatre, art and music, including the Royal Court Theatre, Cadogan Hall and Saatchi Gallery. Cadogan recognises that arts and the artistic community play a vital part in the fabric of the neighbourhood.



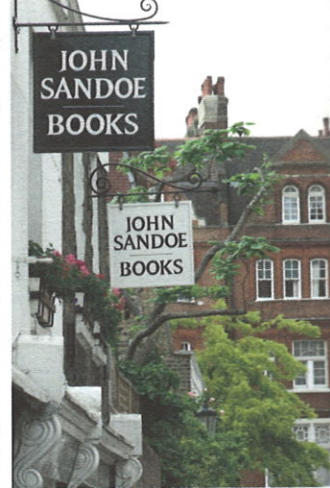
ABOVE
Cadogan Hall: A 900-seat concert hall and home to the London Philharmonic Orchestra, also location for a wide range of events from children's shows to talks, jazz and opera.

RIGHT
Orca made from leaves and flowers; part of Chelsea in Bloom, London's largest free floral art festival funded and organised by Cadogan, in association with the RHS.



Our Neighbourhood

Chelsea is one of London's 'villages', with a distinct community feel and renowned for the mix of characterful independent shops, world-class flagships, thriving arts scene, restaurants, great pubs, iconic hotels and stunning homes – against a backdrop of rich history, elegant architecture and beautiful green spaces.



The area is renowned for its art galleries and cultural institutions, as well as many local and international events, such as The Chelsea Flower Show and Masterpiece London held at the Royal Hospital every year. Duke of York Square is home to a weekly fine food Market, the Chelsea Summer Fete and Wimbledon screenings, while the Saatchi Gallery and Chelsea Old Town Hall host numerous pop-up exhibitions and events.

Rossetti Studios is perfectly positioned, with only a 5-minute walk to King's Road in one direction and the River in the other, while Sloane Square is a 15-minute stroll away.



The Studios

Set back from the street, accessed via a charming archway and courtyard, Rossetti Studios are rare surviving artist's studios. Built in 1894 in the new Queen Anne style, embodying the aesthetic ideals of 'Sweetness and light' they have been beautifully renovated and are filled with original features.

As part of the refurbishment, artisans were employed to recreate original elements that had been lost, such as the cast-iron courtyard lantern light.

All of the studios offer newly fitted kitchen and bathroom facilities.



EQUIPPED ARTIST SINK

A deep sink, often separate from the kitchen and bathroom, to enable the cleaning of brushes and palettes



CANVAS SLIT

An important ancillary element used to remove large canvasses from 1st floor studios to street-level without the need to navigate staircases and normal-sized doors



SPLIT-LEVEL GALLERIES

A space for an artist's model to change and/or to store canvasses



HIGH CEILINGS & EXPANSIVE STUDIO SPACE

To accommodate tall windows and large sculptures or paintings on a stand or easel. And wide enough to enable side-lighting of a work, long enough to assess it from a distance, large enough to accommodate furniture and the fabrication of outsize canvasses flat on the floor



LARGE NORTH-FACING WINDOWS & SKYLIGHTS

Provide a constant natural light and overhead lighting (via a lighting rig) enabling the balancing of light within the studio



ATTRACTIVE SPACE

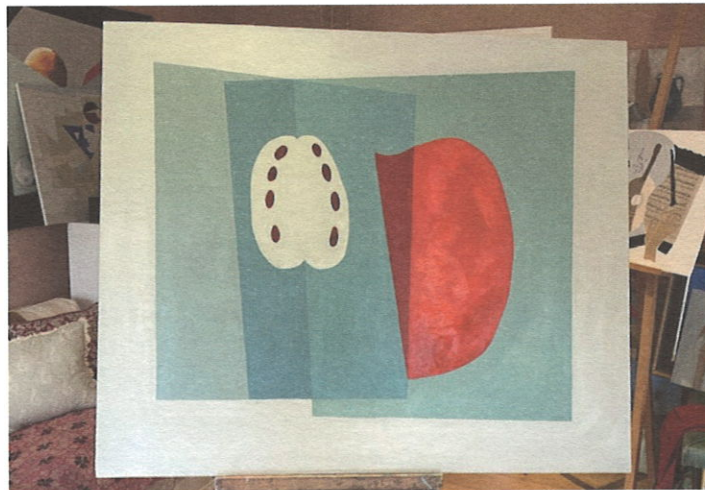
For working in and impressive enough for use as entertainment and sale rooms, the studios sport beautiful detailing in places, such as fireplaces, tiles and elegant sinuous staircases



About Cadogan

Cadogan takes pride in the vibrant history and heritage that makes this area unique and is committed to its long-term success. The Estate spans 93 acres of the Royal Borough of Kensington & Chelsea and has been under the same family ownership for 300 years.

Cadogan's patronage of the arts is part of the strategy to enrich the area's unique character, while safeguarding its future vitality.



The Apple (2019) by Effie Andraea, one of the artists resident at Rossetti Studios

