

OFFICE TO LET

25 IVES STREET

CHELSEA, LONDON. SW3

1,626 sq.ft - Available as whole or split



Contact

Ross Crummey
020 7581 9722

ross@milescommercial.co.uk

Viewings

Strictly by prior appointment via sole agents:

Location

The premises are on the north side of Ives Street close to the junction of Draycott Avenue Ives Street is close to the fashionable Brompton Cross area near to Brompton Road which provides excellent restaurant and shopping facilities South Kensington (Circle District lines) and Sloane Square (Circle District lines) Knightsbridge (Piccadilly line) underground stations are all within a few minutes' walk.

Accommodation

The premises is arranged over the second floor a mixture of 3 private offices and open planned space. The approximate area as follows:-
Second floor: 1,626 sq.ft 151.06 sq.m

Amenities include:
Self-contained, kitchenette.

Rates

Interested parties are advised to make their own enquiries with RBKC rates department.
Rate Payable £34,611 pa 2021/22

Further details are available from www.voa.gov.uk

Rent

£60,975 pax

Lease

A new lease available for a term to be agreed, contracting outside the security of tenure provisions of the Landlord & Tenant Act 1954.

Service charge estimated at £8.50psf

EPC

Available on request

Legal Costs

Each party to bear their own



MILES COMMERCIAL

MilesCommercial.co.uk

Location

For identification purposes only, not to scale.



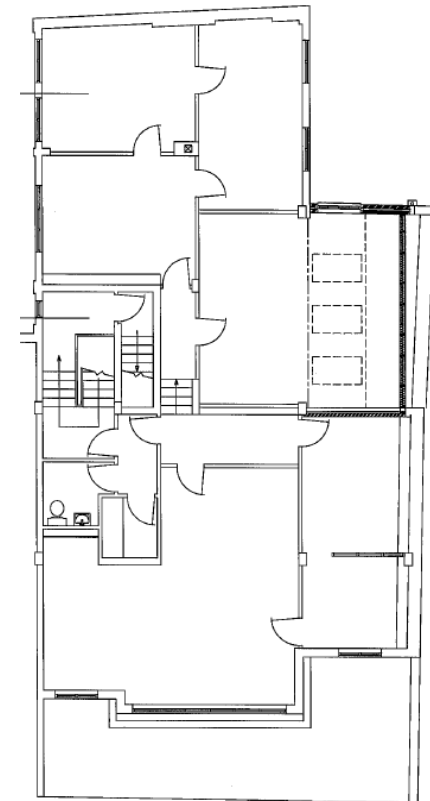
Source: google maps

Pictures



Floor Plans

For identification purposes only, not to scale.



[MilesCommercial.co.uk](https://www.MilesCommercial.co.uk)