

OFFICES TO LET – 1<sup>st</sup> floor (1,795 sq.ft/166.78 sq.mts)  
141 KINGS ROAD, LONDON – SW3



*Location*

---

The premises are on the south side of the Kings Road at the junction with Flood Street. The location is well known for its shops and restaurant. South Kensington Station (Piccadilly, Circle and District lines) and Sloane Square (Circle and District lines) are within easy walking distance).



*Description*

---

The office is on the first floor with a dedicated entrance on Flood Street. The office benefits from very good natural light. There are meetings rooms and open planned office area.

*Terms*

---

Rent – £94,250 pax  
Business rates – Rateable value £62,500 rates payable £30,999.65 per annum 2021/22  
Occupation – available from the start of November

First: 1,795 sq.ft 166.78 sq.m

Lease – is available by assignment until September 2024

*Amenities*

---

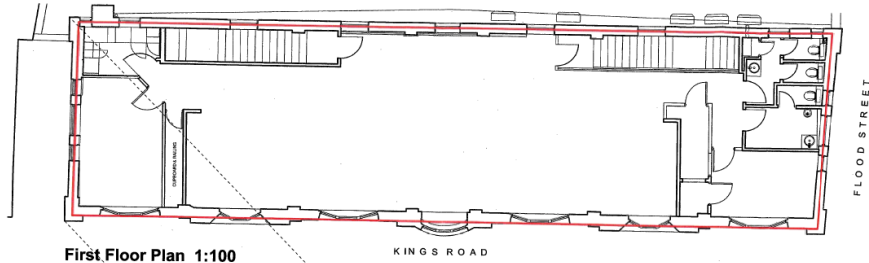
Male & Female WC'S  
Perimeter Trunking  
Air conditioning

24 hour access  
Kitchenette  
Plaster ceiling

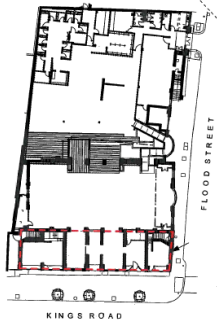


OFFICES TO LET – 1<sup>st</sup> floor (1,795 sq.ft/166.78 sq.mts)

141 KINGS ROAD, LONDON – SW3



First Floor Plan 1:100



Ground Floor Plan 1:100



Peter Bromwich  
T 020 7581 9722  
Peter@milescommercial.co.uk

Ross Crummey  
T 020 7590 8955  
M: 07714956016  
Ross@milescommercial.co.uk

Whilst every care is taken in the preparation of these particulars Miles Commercial and the vendor/lessor take no responsibility for any error, mis-statement or omission in these details. Measurements are approximate and for guidance only. These particulars do not constitute an offer or contract and members of the Agent's firm have no authority to make any representation or warranty in relation to the property.