

D1 MEDICAL – LOWER GROUND FLOOR (1,044 SQ. FT./96.98 SQ. MTS.)

10 CROMWELL PLACE, LONDON – SW7 2JN



Location

The offices are on the west side of Cromwell Place, midway between Cromwell road and Thurloe Place. South Kensington underground station (Piccadilly, Circle and District lines) are within a few minutes walk.

The area is well served by restaurants and nearby is Exhibition road which has permanent outdoor seating.

Accommodation

The Medical suite is approached from an external staircase leading down to a front patio. The suite has a waiting room fronting onto Cromwell place with 3 further rooms, which can be used as individual consulting rooms.

The approximate floor area is:

Lower Ground floor: 1,330 sq. ft. 123.60 sq. mts.

Terms

Rent – £41, 500 per annum exclusive.

Lease- A new lease for a term by arrangement, contracting outside the provisions of the Landlord & tenant act 1954 part II as amended.

Possession viewing – February 2022
completion of legal formalities strictly by appointment through sole agents.

Rateable Value - £40,500 value

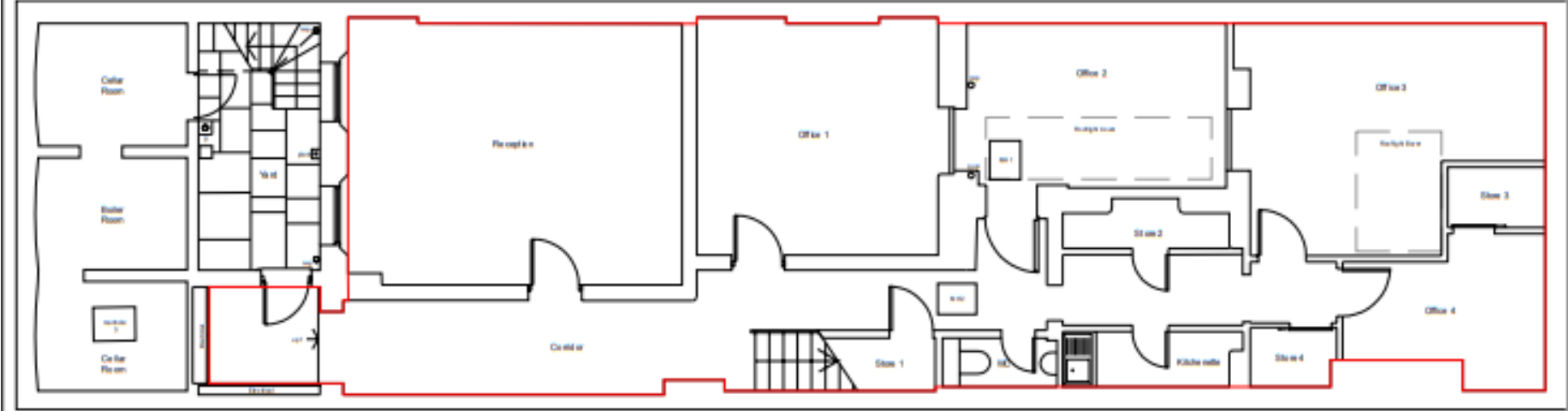
Legal costs – Each party to bear their own legal costs.

Amenities

WC
Reception
Fully carpeted

24 Hour Access
Kitchenette
Central heating

D1 MEDICAL – LOWER GROUND FLOOR (1,044 SQ. FT./96.98 SQ. MTS.)
10 CROMWELL PLACE, LONDON – SW7 2JN



Ross Crummey
T 020 7590 8955

Ross@milescommercial.co.uk

Peter Bromwich
T 020 7581 9722

Peter@milescommercial.co.uk

Whilst every care is taken in the preparation of these particulars Miles Commercial and the vendor/lessor take no responsibility for any error, mis-statement or omission in these details. Measurements are approximate and for guidance only. These particulars do not constitute an offer or contract and members of the Agent's firm have no authority to make any representation or warranty in relation to the property.