

# OFFICE TO LET

## 25 IVES STREET

1<sup>st</sup> Floor – Front

**CHELSEA, LONDON. SW3**

830 Sq.Ft



### Contact

Peter Bromwich  
020 7581 9722

[Peter@milescommercial.co.uk](mailto:Peter@milescommercial.co.uk)

### Viewings

Strictly by prior appointment via sole agents:

### Location

The premises are on the north side of Ives Street close to the junction of Draycott Avenue Ives Street is close to the fashionable Brompton Cross area near to Brompton Road which provides excellent restaurant and shopping facilities South Kensington ( Circle District lines) and Sloane Square (Circle District lines) Knightsbridge (Piccadilly line) underground stations are all within a few minutes' walk.

### Accommodation

The offices are arranged over part of the first floor and consist of open plan offices and four offices.

Rear: 830 Sq.Ft 77.11 Sq.Mt

Amenities include:

- \* Plaster ceilings
- \* Male /female WC
- \* Central heating
- \* Kitchen
- \* 24 hour access
- \* Wooden floors
- \* Part comfort cooled

### Rent

£35.00 psf

### Lease

A new lease available for a term to be agreed, contracting outside the security of tenure provisions of the Landlord & Tenant Act 1954.

Service charge estimated at  
£10.00 Psf

### EPC

Available on request

### Legal Costs

Each party to bear their own



**MILES COMMERCIAL**

[MilesCommercial.co.uk](http://MilesCommercial.co.uk)

## Location

For identification purposes only, not to scale.



Source: google maps

## Rates

Interested parties are advised to make their own enquiries with RBKC rates department.

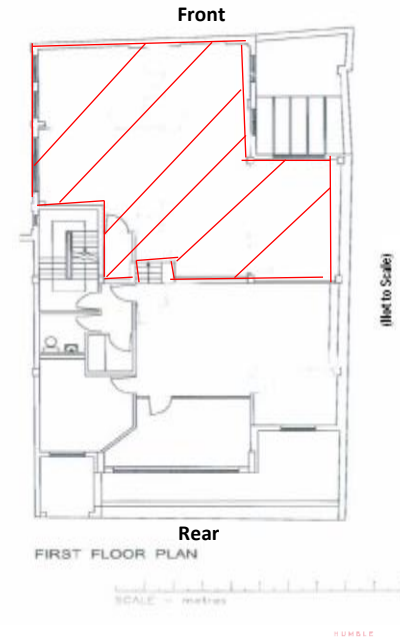
The unit is currently being assessed by the district valuer.

Further details are available from

[www.voa.gov.uk](http://www.voa.gov.uk)

## Floor Plans

For identification purposes only, not to scale.



[MilesCommercial.co.uk](http://MilesCommercial.co.uk)